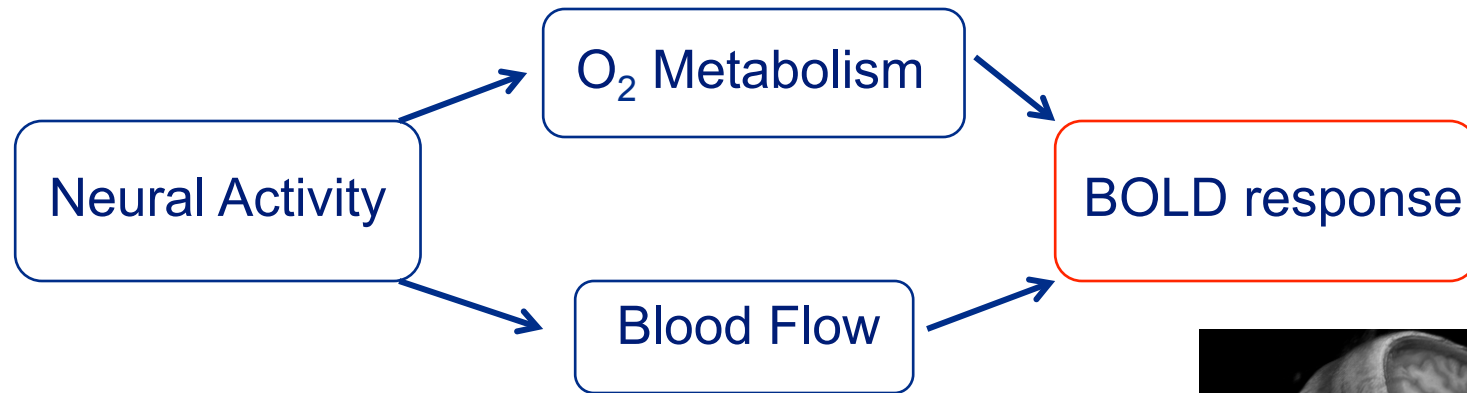
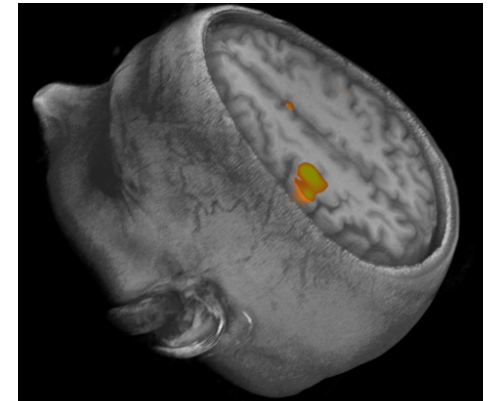


The blood oxygenation level dependent (BOLD) signal



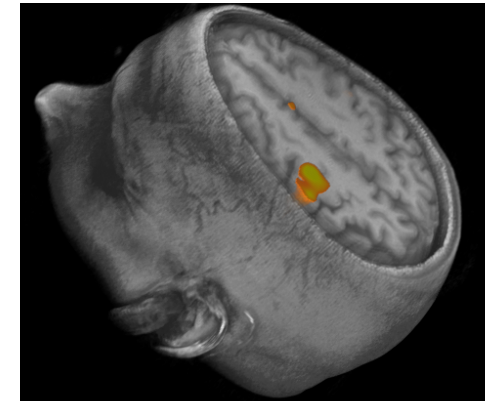
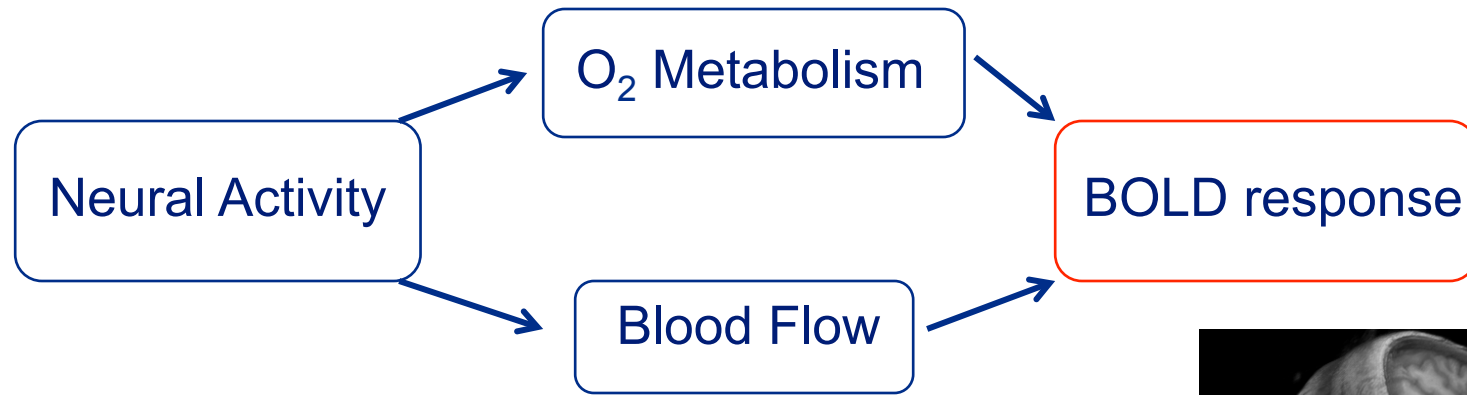
Physiological basis of fMRI

- Development of quantitative methods to measure blood flow and oxygen metabolism
- Modeling O₂ transport, neurovascular coupling, and the BOLD effect
- Experiments in humans looking at the relationships between neural activity, blood flow and O₂ metabolism



Richard Buxton

The blood oxygenation level dependent (BOLD) signal



Radiology
Collaborations

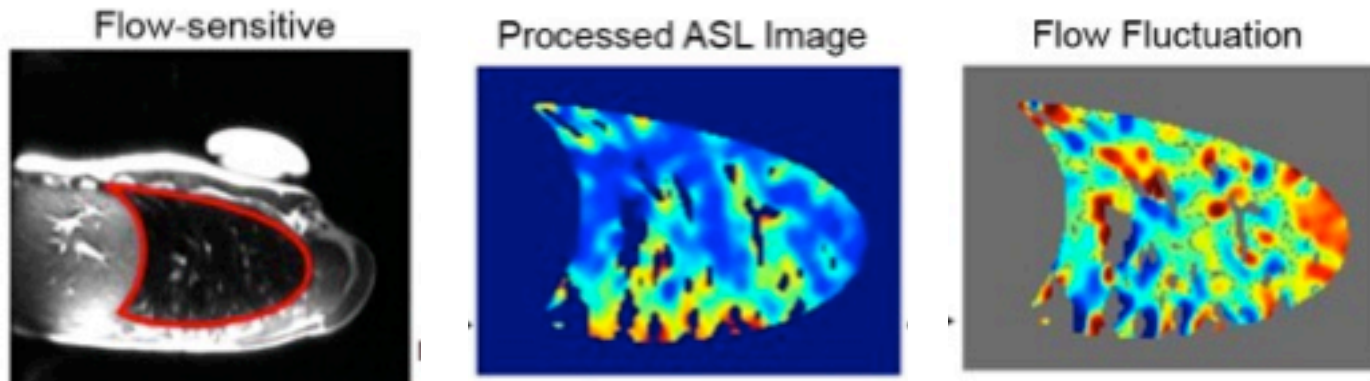
Anna Devor
David Dubowitz
Tom Liu
Eric Wong

MD/PhD Students

Val Griffeth
Aaron Simon
Eulanca Liu

Richard Buxton

Dynamics of blood flow in the human lung



Development of methods to measure the spatial/temporal dynamics of pulmonary blood flow at a scale of $\sim 1 \text{ cm}^3$ and 5 sec

Radiology
Collaborations

Sue Hopkins
Kim Prisk

MD/PhD Students

Amran Asadi
Eric Geier

Richard Buxton